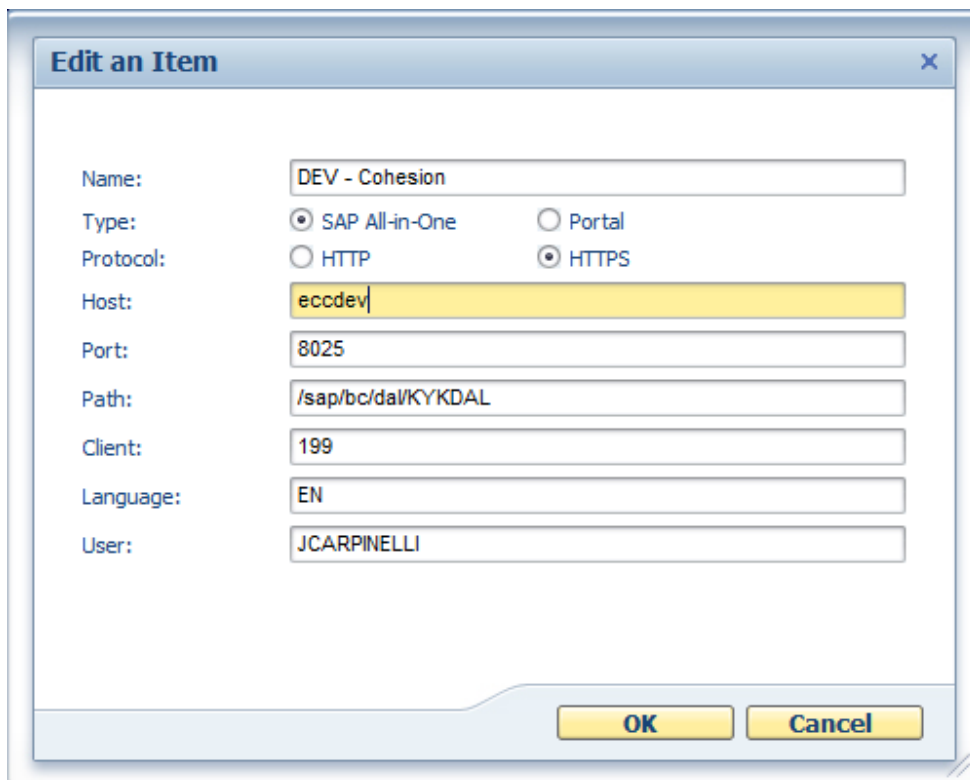


## A Quick Look at NetWeaver Business Client

*John Carpinelli, Cohesion, Inc*

The SAP graphical front-end was a revolution when it was introduced back in the mid 1990s as part of the R/3 product. A decade later, SAP has released a new front-end called the NetWeaver Business Client. The NWBC has a role-based design with the menus based on user authorizations. The client can display multiple applications in a common window including web sites, Adobe PDF documents and standard SAP screens.



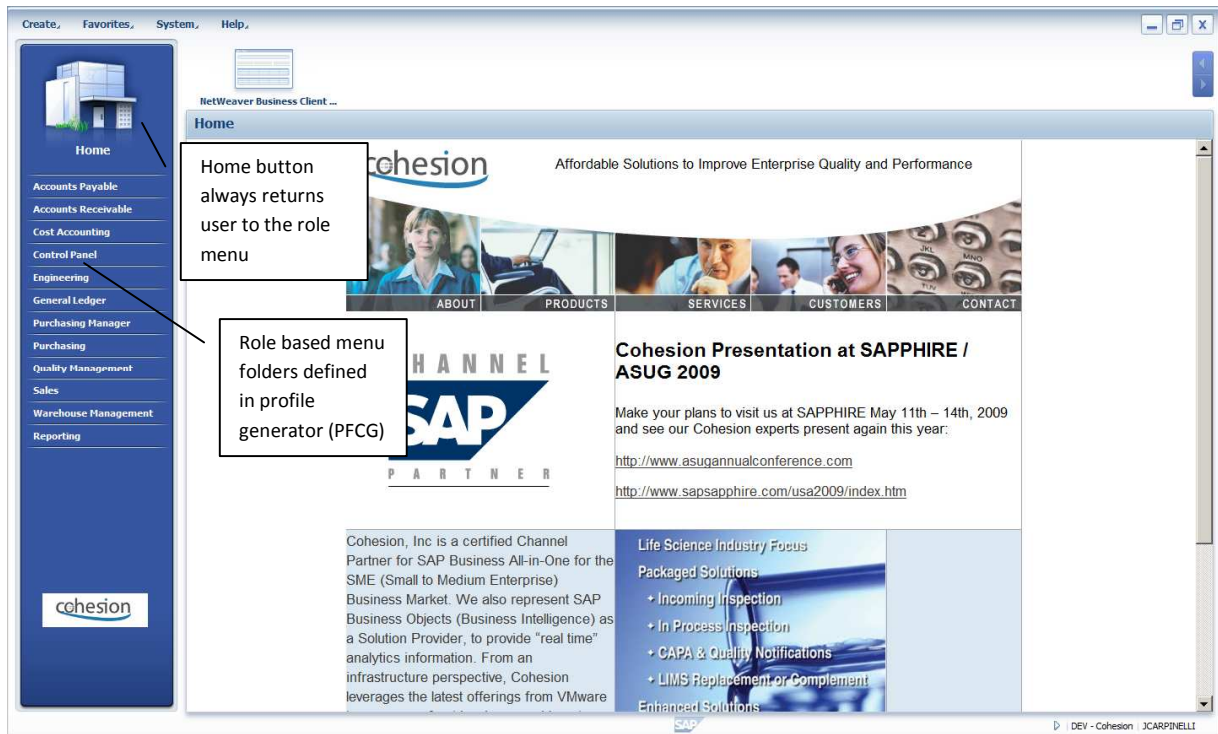
The screenshot shows a dialog box titled "Edit an Item" with a close button (X) in the top right corner. The dialog contains the following fields and options:

- Name: DEV - Cohesion
- Type:  SAP All-in-One  Portal
- Protocol:  HTTP  HTTPS
- Host: eccdev
- Port: 8025
- Path: /sap/bc/dal/KYKDAL
- Client: 199
- Language: EN
- User: JCARPINELLI

At the bottom of the dialog are two buttons: "OK" and "Cancel".

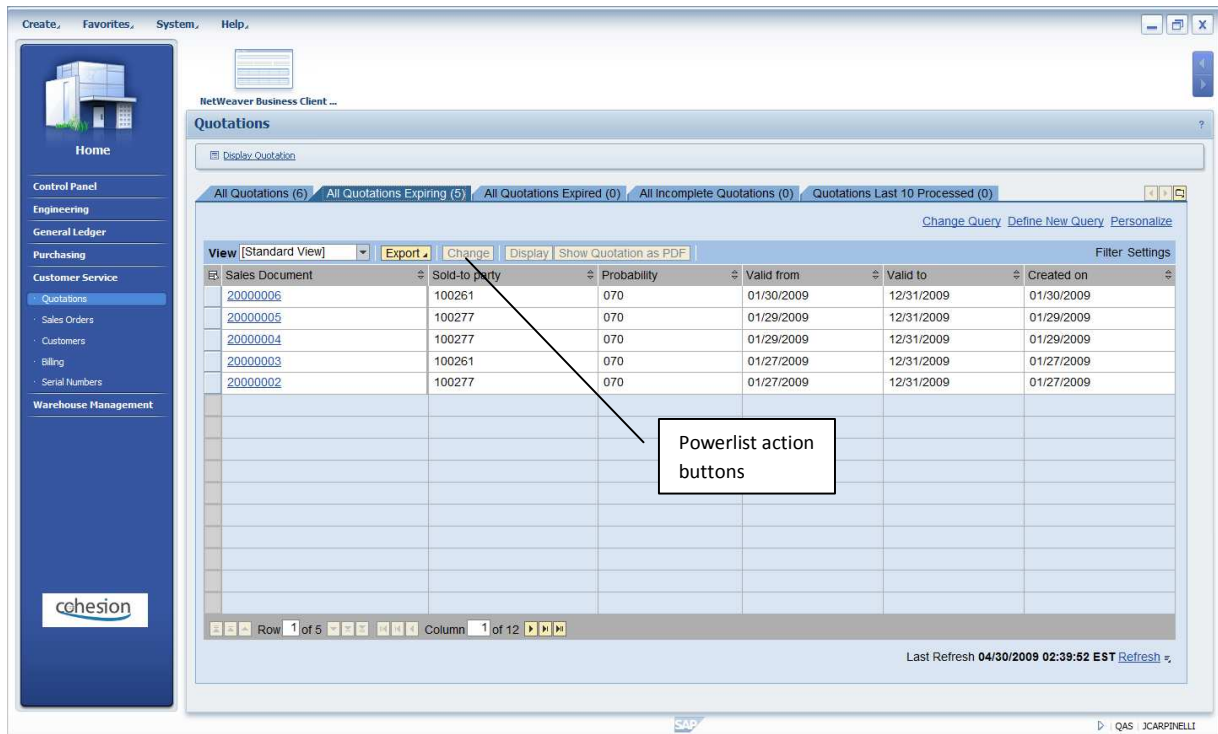
**Figure 1** Logon details for NWBC connection to SAP

The first difference from the old client that you will notice is the logon window to access SAP. The NetWeaver client connects using the HTTPS protocol which is the same link used for secure web-sites such as online banking. To deploy the client, you will need to obtain a Secure Socket Layer (SSL) certificate for your SAP server. You can generate the certificate within your system, but for best results you can purchase one from a certificate authority like "Verisign" or "GoDaddy". Note that you need to have a special "KYKDAL" role added to your user to access the new client also.



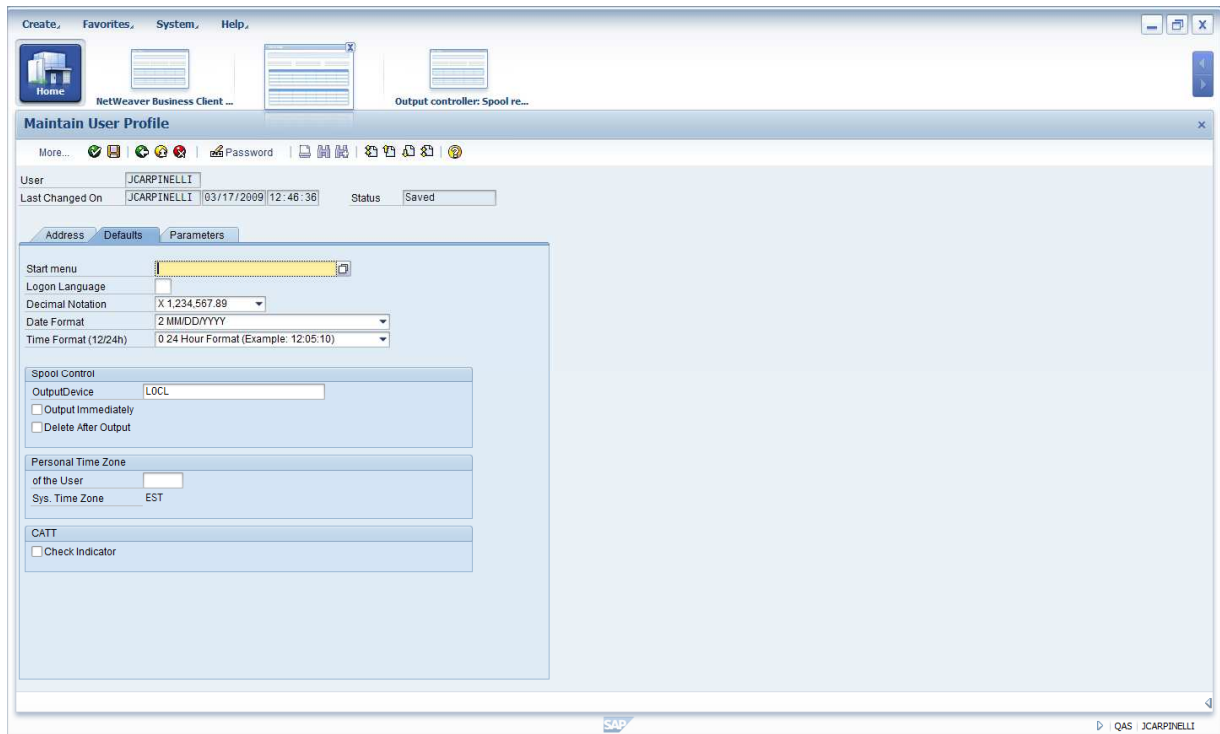
**Figure 2 The NWBC can be configured to display a company web page after initial logon**

The SAP implementation team can heavily customize the appearance of the client. The company intranet web pages can be included in the content window, while the menu structure is defined by the user roles. The profile generator (transaction PFCG) is the tool for customizing the menus and including internet content relevant for each user group. Note that your corporate logo can be included in the bottom left of the menu bar also.



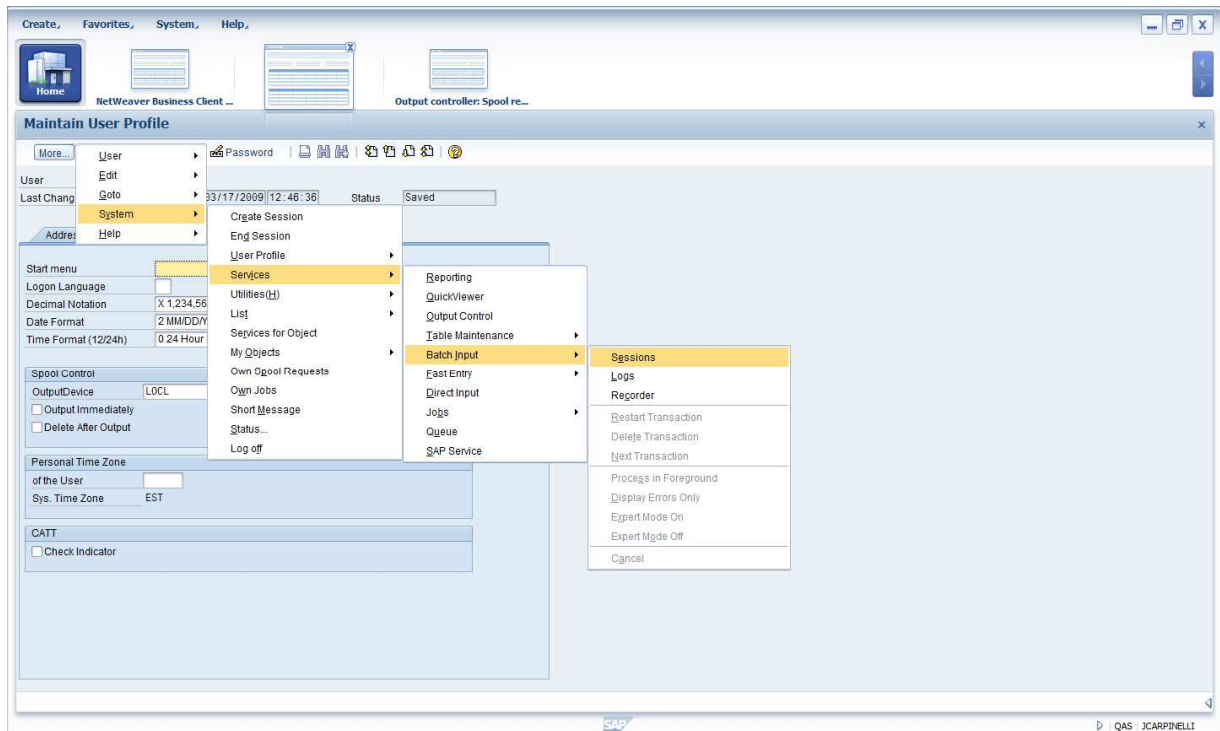
**Figure 3** The SAP power-list is shown in this screenshot

The power-list features heavily in the NWBC user experience. The list is refreshed as new documents are posted in the system. The user can select a document and then apply actions such as "Change", "Display" or "Show as PDF". All outputs can be converted to PDF easily to allow electronic transmission to business partners. The power-lists can be customized by the implementation team using the transaction SPRO in SAP. It is relatively simple to create custom power-lists using a template class and some basic ABAP programming.



**Figure 4** Example of SAP front-end screen within NetWeaver business client

Current users of SAP will recognize the standard front-end transactions embedded within the NWBC. SAP has released a theme to blend the standard transactions into the look-and-feel of the client. Each session that is opened will appear as a separate icon in the top section of the screen. You can switch between sessions by clicking on the icons. At any time, the Home icon will return you to the role menu where you can start another transaction.



**Figure 5** The standard SAP menu options are available

As you can see in Figure 5, the standard SAP menu options are still available in the NWBC. Web based transactions such as the power-lists will provide action buttons and hyperlinks instead of the SAP menu structure. Browser-based applications such as CRM can be integrated into the NWBC front-end to provide users with a unified menu structure. If "single-sign-on" is configured, your users can access many applications without bothering to switch between windows or enter multiple passwords.

Should you implement the NWBC for your organization? Here are some reasons to consider it:

- You probably own it already - if you have bought SAP ECC 6.0 then you should be licensed to run the client. You'll need to have enhancement pack 3 installed to use the NWBC.
- Appearance matters - your end users will enjoy working with a more attractive front-end. Integrating web applications such as your company intranet or online documentation creates a clean solution for new users of your system.
- Built-in workflow - the power-lists provide basic work-flow for functions such as delivery and billing. For example, as deliveries are issued the billing power-list will automatically refresh with new lines for invoicing.

Cohesion was one of the first consulting companies to implement the NWBC in production for a North American SAP customer. The response from the end-users has been positive overall. The product will

improve further as SAP is planning to release an updated version in May 2009. If you would like some advice on the NWBC implementation process, please don't hesitate to contact Cohesion. Our phone numbers and emails can be found on our corporate web site at [www.cohesion.biz](http://www.cohesion.biz).