

HOW TO: Load Intermediate SSL Certificate via Transaction STRUST

Table of Contents

Symptoms.....	1
Cause.....	1
Resolution	1
More Information	5

Symptoms

You need to load an intermediate SSL certificate from your Certification Authority into SAP. For example, you purchased an SSL certificate from www.godaddy.com and GoDaddy is not listed as a certification authority in the base SAP system.

Cause

SAP is delivered with a limited number of certification authorities (CA). For other CAs, you need to load intermediate certificates into the system.

Resolution

Use

This procedure will load the intermediate certificates into the system using transaction STRUST.

Prerequisites

The certificates should be loaded into client 000 of the target system. Ensure you have appropriate access to transaction STRUST.

Procedure

1. Download the intermediate and root certificates from your certification authority. For example, the GoDaddy certificates can be downloaded from this web-site.
<https://certs.godaddy.com/Repository.go>
2. Save the root and intermediate certificates to your local computer.
3. Logon to SAP in client 000. Run transaction STRUST.
4. Click the Import Certificates button as shown.

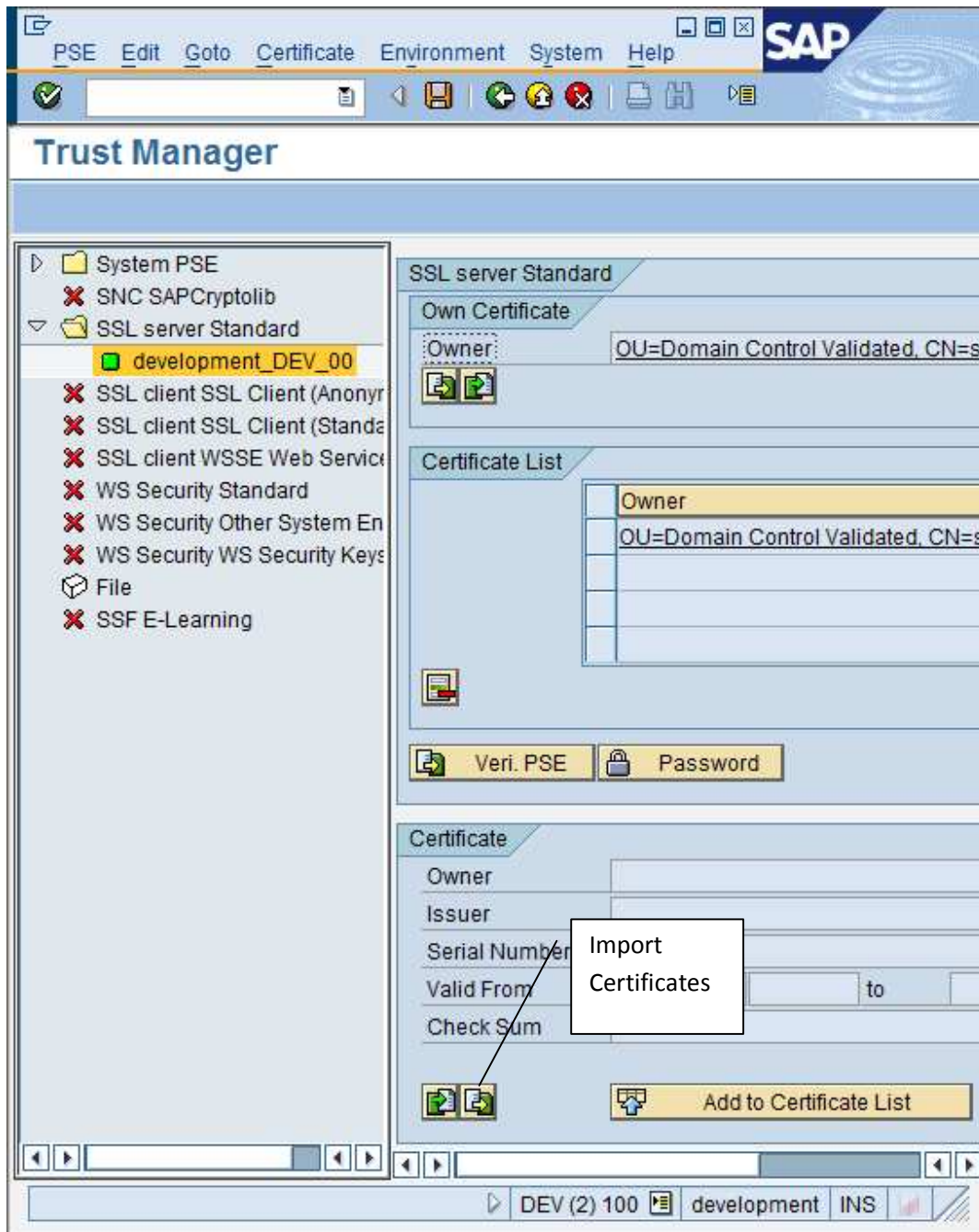


Figure 1 Transaction STRUST with the Import Certificates button to be clicked

5. Upload the certificate from your local PC using the file browser. Most certificates will be delivered in Base64 format by the CA.

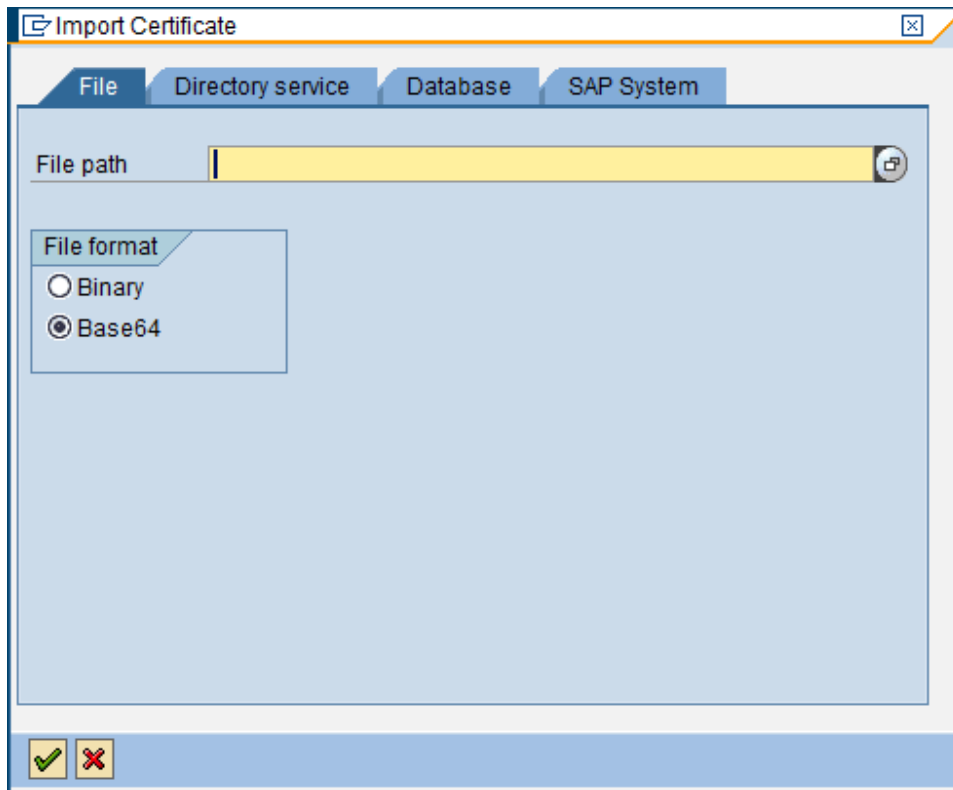
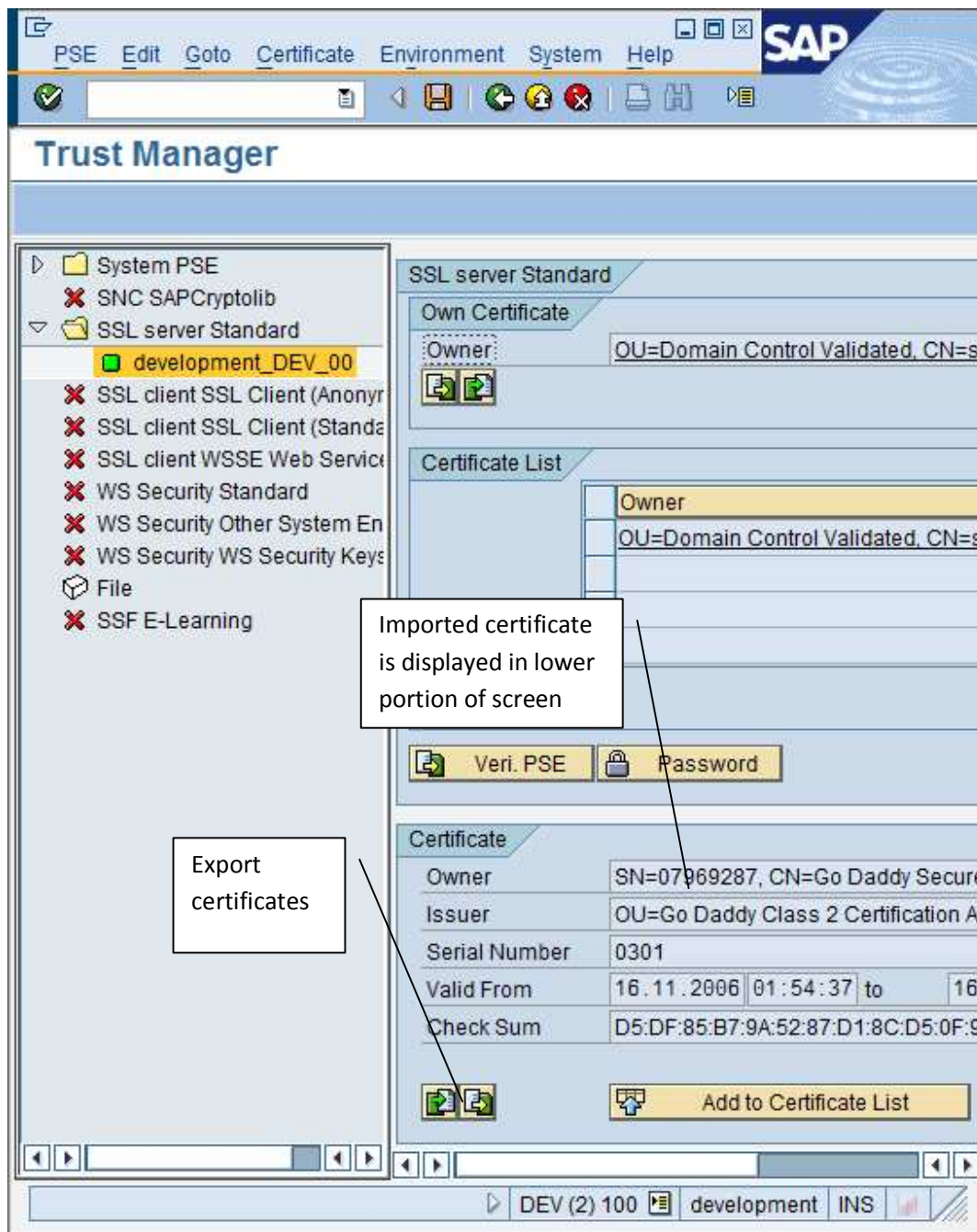


Figure 2 Upload the certificate file into your system from the local computer

6. After uploading the certificate, you will be returned to the STRUST screen. Click on the "Export Certificate" button as shown.



7. After uploading the certificate, you will be returned to the STRUST screen. Click on the "Export Certificate" button as shown. Select the "Database" tab and enter the details of your certificate.

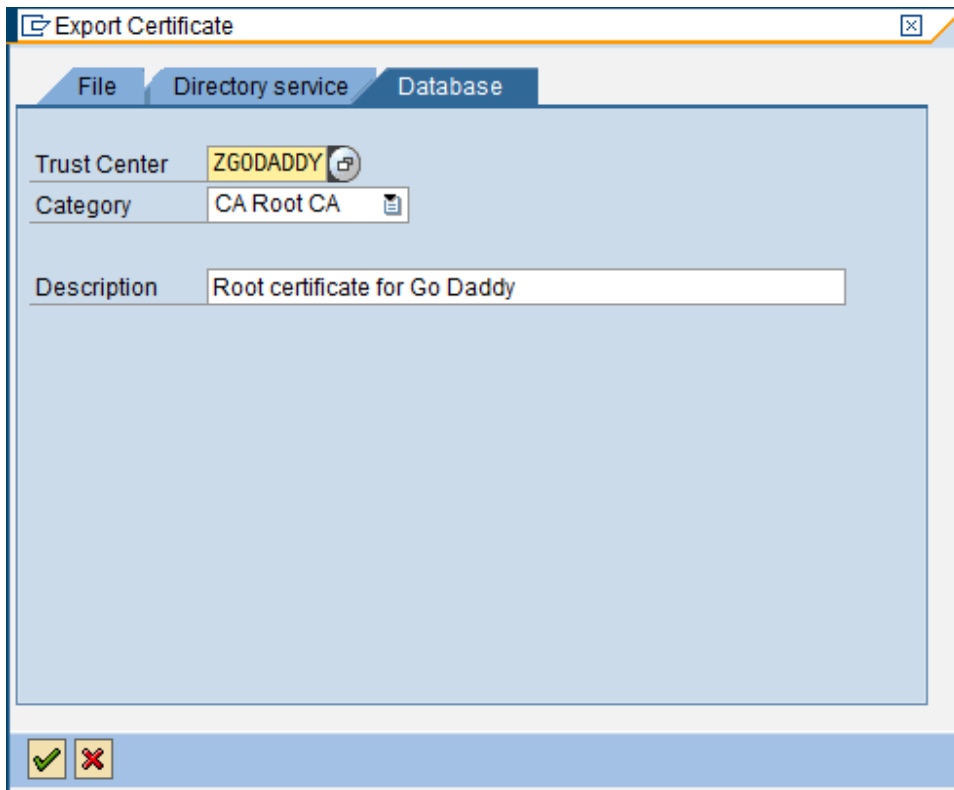


Figure 3 Example entries for the Go Daddy root certificate in the database

More Information

Applies To

SAP ECC, CRM, Solution Manager

Additional Support

For additional support, please contact Cohesion directly. Contact information can be found at the following web address: <http://www.cohesion.biz/contact>.